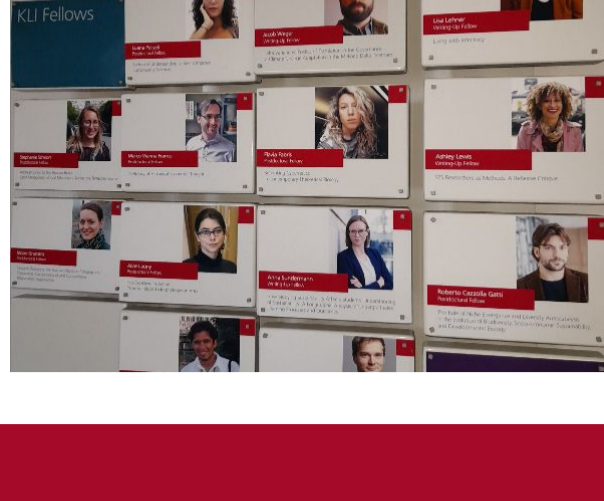




## THE KLIFE NEWSLETTER

Welcome to the 2021 Spring issue of The KLife Newsletter!

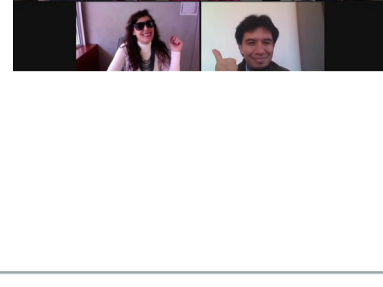


## STORIES FROM THE KLI

Science-Art-Society

### Kicking off ClimArtLab: "Evolving Futures by Owning Our Mess"

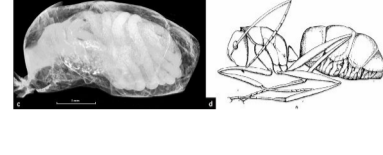
The *ClimArtLab* project, organized by Guido Caniglia (KLI) and Dominika Glogowski (artEC/Oindustry), is a highly experimental space for scientists, artists, and philosophers to create art interventions that can induce behavioral change. We recently kicked off the first of a series of workshops. [Read more...](#)



Interview

### Sifting through the shapeshifters: an interview with Alice Laciny

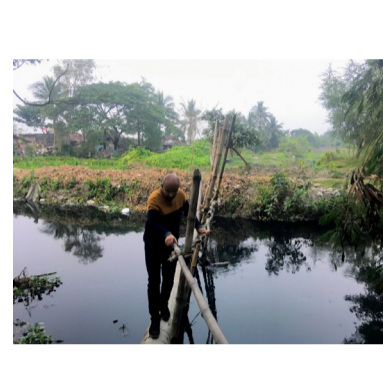
Alice Laciny's latest publication in *EvoDevo* is the first comprehensive review of ant-changing parasite infections. We interviewed Alice to talk about the patterns that emerged from the collection, what they mean for the conceptual and empirical study of ant-parasite systems, and the future of eco-evo-devo studies. [Read more...](#)



Fellow essays

### Where there's muck there's brass: making money from sewage in Kolkata

Amitangshu Acharya writes about Kolkata's "Black Gold," the urban sewage stitching together land and labor as it courses through canals and pipes, in *The Economist*. [Read more...](#)



Visiting fellows

### Pregnant females as historical individuals

How can we understand the individuality of pregnancy? When does one individual end and a new one begin? Laura Nuño de la Rosa, Mihaela Pavlicev, and Arantza Etxeberria propose a resolution to this puzzle from an evo-devo perspective in their latest piece in *Frontiers in Psychology*. [Read more...](#)



## RECENT EVENTS

KLI Colloquia

### Save the dates! The 2021 spring colloquium is here!



Check out [the wonderful line-up of speakers](#) we've organized for the spring term. We will update [our event calendar](#) as we create registration links for each event. If you are [subscribed](#) to this newsletter, you will receive notifications of the talks a week before each event.

Fellow initiatives

### Workshop on visualization

Our writing-up fellows are making use of their unused travel funds to organize professional development workshops. The aim of the Visualization Workshop is to help fellows prepare visualizations and infographics that can translate, depict, and more effectively communicate scientific research. Instructors are KLI alumna Sophie Veigl and graphic designer Matthias Gil Hawranek. [Read more...](#)



Writing workshops

### KLI Labs for writing-up fellows

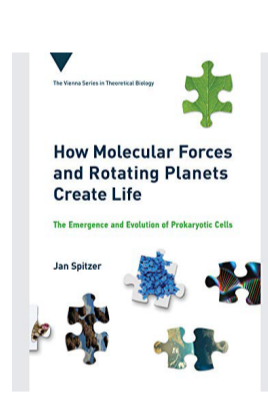
During our break between the winter and spring terms, we hosted four KLI Labs to collectively help our writing-up fellows with their dissertation chapters. We took a closer look at the projects of [Ashley Lewis](#), [Lisa Lehner](#), [Anna Sundermann](#), and [Jacob Weger](#).

## VIENNA SERIES & BIOLOGICAL THEORY

Vienna Series in Theoretical Biology

### How molecular forces and rotating planets create life

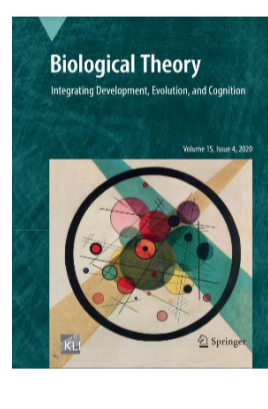
What is life? How did life start on Earth? How can we know? Jan Spitzer's [new book](#) "How Molecular Forces and Rotating Planets Create Life: The Emergence and Evolution of Prokaryotic Cells" is a deeply conceptual book on the role of cyclically-driven processes in the origin of life. [Read more...](#)



Biological Theory

### March 2021 issue coming soon!

Our March 2021 issue will soon debut on the *Biological Theory* website. Read essays on the [evolution of human morality](#), [adaptive thinking in evolutionary psychology](#), [moral realism](#), [type specimens](#), and [an epitaph in memory of Raphael Falk](#). Our latest "Classics in Biological Theory" is a [commentary by Soto and Sonnenschein](#) on D.W. Smithers's "Cancer: An Attack on Cytologism" (1962).



## NEW PUBLICATIONS

Interview

### Storytelling for sustainability communication: interview with Anna Sundermann

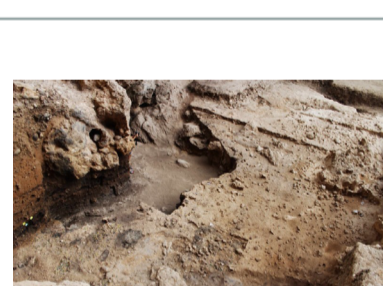
How can we tell stories that lead to behavioral changes for sustainable futures? We interviewed Anna Sundermann on a new book and an online tool that can help activists and communicators tell evidence-based, effective stories to make a difference. [Read more...](#)



Fellow essays

### Neanderthal feces "on fire" illuminates gut microbiome features

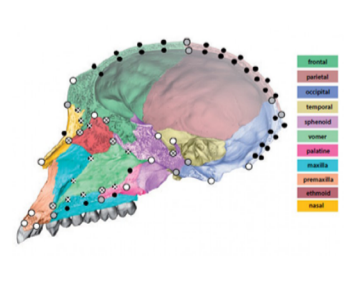
Around 50k years ago at an ancient campsite in Spain, a Neanderthal left their feces in the fire pit. It survived until recently when archaeologists discovered tiny particles in the layers of sediment. With these extraordinary samples, Stephanie Schnorr and co-authors attempted to [reconstruct a Neanderthal gut microbiome](#). [Read more...](#)



Fellow essays

### New morphometric methods for phylogenetic reconstruction

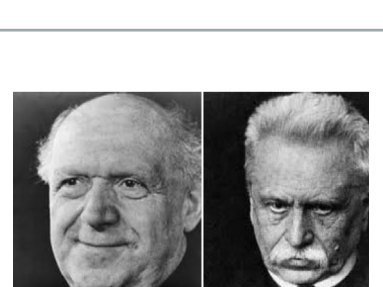
Organismal shape can be decomposed into different components that carry distinct evolutionary signals. Nicole Grunstra and her colleagues found that while functionally relevant shape components often are under natural selection, "constructional details," such as the contributions of the different bones to overall shape, tend to evolve more neutrally and thus better trace phylogenetic history. [Read more...](#)



Fellow essays

### Ontology, epistemology, facts, and values in the Other Austrian Economics

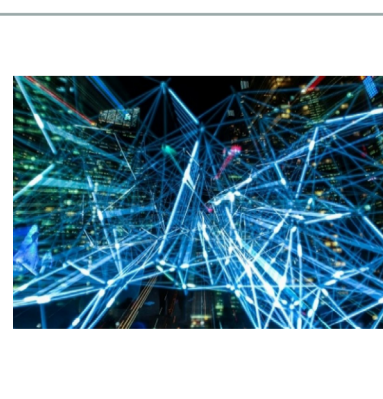
Marco Vianna Franco [invites us on a journey](#) into how resource flows and value-based judgements served as inputs to socially-inclusive economic plans in the works of Otto Neurath and Josef Popper-Lynkeus, who in the 1910s and 1920s ascended as the main advocates of a heterodox, biophysical approach to economic science dubbed the "Other Austrian Economics". [Read more...](#)



New publication

### Scientists' responsibility for global futures

In a perspective piece for AAAS's *Science and Diplomacy*, scientific director Guido Caniglia and coauthors [call for a new convention for science diplomacy](#). [Read more...](#)



## Get in touch!

The KLI is an independent center of advanced studies in the life and sustainability sciences. The mission of the institute is to **enable scientific reasoning** that can contribute to understanding and sustaining life on Earth in its biological, cognitive, social, and cultural diversity.

The KLI supports research focusing on **evolutionary theory**, especially in its relation to development, cognition, and sustainability science, as well as on the history, philosophy, and social studies of science.

You can find further information about KLI on our [Homepage](#), [Twitter](#), and [YouTube](#).

The KLife Newsletter was conceptualized and produced by Communications Officer Lynn Chiu. Please send comments and questions to [comms@kli.ac.at](mailto:comms@kli.ac.at)