



## THE KLIFE NEWSLETTER

### Welcome to the 2022 Winter issue of The KLife Newsletter!

We are back in full swing with events and enjoying the KLI space together. New writing ups have arrived and with them lots of fresh and inspiring ideas. New fellows and visitors will be coming. Many of our postdocs found great opportunities after the KLI, which is doing its job as a springboard.

From the KLI to our extended community, We wish you a warm and safe holiday season!

The KLI Team



The KLI Xmas party (credit: David Harrison)

## NEW FELLOWS

2022-23 Writing-Ups

### Cognition and knowledge: Between evolution and sustainability

The current cohort of dissertation writing-up fellows were recruited for their unique and innovative approaches to these core KLI research domains— Cognition, Evolution, and Sustainability. We invited Jonatan Palmblad, Alejandro Fábregas-Tejeda, Ilvanna Salas Leon, David Harrison, and Lauren Lambert to share how they navigate these disciplinary boundaries. [Read more...](#)

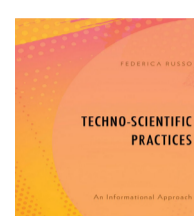
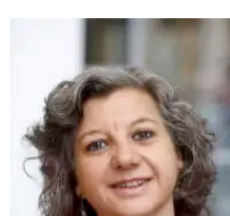


## NEWS AND UPCOMING EVENTS

Book symposia

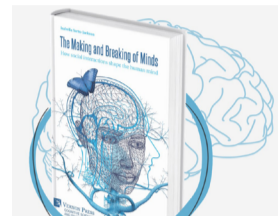
### Book symposium with Federica Russo

On Jan 19th, 2023, Federica Russo will talk about her new book— *Techno-Scientific Practices: an informational approach*. [Save the date!](#)



### The making & breaking of minds

Isabella Sarto-Jackson's new book— *The Making and Breaking of Minds*— now has [a dedicated book site](#). A book symposium with Isabella will be announced soon.



Conferences

### Call for submissions! ISHPSSB 2023

[ISHPSSB 2023](#) (July 9-15, 2023) will take place on the St. George campus at the University of Toronto in collaboration with Western University. Deadline for submissions is Jan 31st, 2023.



In addition, the organizers of EuroEvoDevo have just announced that [EuroEvoDevo 2024](#) (June 25-28, 2024) will be held in Helsinki, Finland!



## EVENT HIGHLIGHTS

Reading groups

### Agents, agency, feminist STS

The KLI is part of the revived [Vienna Science Studies Lab](#), which is kick starting its program with [a new reading group on feminist STS](#). The current cohort of writing-up fellows have also started [a reading group on Agents and Agency](#). Both reading groups take place in Vienna. If you're here, you're more than welcome to join!



Professional development

### Introductory workshop with ZARA & research mini-symposium

Each winter, the KLI organizes a two-part professional development workshop for our fellows to get to know each other— both as people and as researchers. [Read more...](#)



Student visit

### CogSci student lab visit

Students of the cognitive science master program at University of Vienna visited us in December to learn more about the type of research supported by the KLI. [Read more...](#)



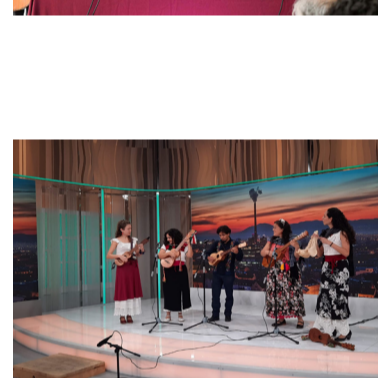
Fellow activities

### When music meets evo-devo

KLI fellows Luis Alejandro Villanueva and Cristina Villegas presented their talk "Procesos de transmisión musical: El Son mexicano y el enfoque evo-devo de reproducción cultural" (Processes of music transmission: The Mexican Son and the Evo-Devo approach to Cultural Reproduction) at the II Coloquio Internacional "El Son Mexicano en Perspectiva" held at the Centro Veracruzano de las Artes "Hugo Argüelles," Puerto de Veracruz, México (Oct 7 - 10).



The event followed Luis Alejandro's participation in the XX International Festival of Traditional Instruments in Buševac, Croatia (Sept 29 - Oct 3) with his group of Mexican Traditional Music "Entramar."



## FEATURED PUBLICATIONS

Journal article

### Is science objective? Think again.

In [a new co-authored paper](#), Manuel Méndez Alonzo and KLI fellow Luis Alejandro Villanueva developed a historical case study that challenges traditional characterizations of scientific knowledge and practice. It shows how 16th century criollos (Spanish-descents born in the colonies) scientists in New Spain developed medical work that elevated their "own virtues" while discrediting the way of life of African descent and indigenous people in the New World. As it turns out, scientific knowledge does not necessarily entail objective knowledge.



Preprints

### Turning evolutionary theory into preventive policies

In three new papers, Orsolya Bajer-Molnár and coauthors further developed action plans based on the Stockholm Paradigm, an evolutionary framework for emerging infectious diseases. They first describe [the DAMA protocol](#), a comprehensive approach focused on [crisis prevention, preparation, and palliation](#). Collaborating with [KY](#) Marina Knickel and Christine Rizzizi, they further [lay out guidelines and strategies](#) at global, regional, and local scales.



Journal article

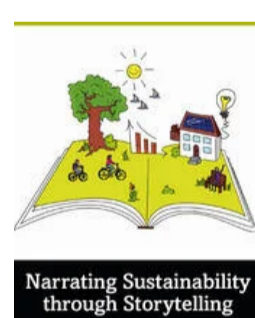
### Municipal housekeepers as early environmental economists

In [their co-authored paper](#), Antoine Missemer and KLI fellow Marco Vianna Franco explore municipal housekeeping as a science-based social movement in the USA at the turn of the 20th century, framing it as an early economics of the urban environment. This new analysis should inspire today's public, urban, and particularly environmental economists to seek deeper engagements with a variety of fields within the natural sciences, from chemistry to ecology.

Book

### English version of "Narrating Sustainability through Storytelling"

Stories and narratives are powerful tools for explaining the world around us. How can we tell stories that lead to behavioral changes for sustainable futures? Previously, we interviewed KLI alumna Anna Sundermann about their new book [\(Telling stories to make a difference: Anna Sundermann on Nachhaltigkeit Erzählen\)](#). We are thrilled that [the English version](#) is now out.



Book chapter

### Affordances and space and landscape perception: ideas for a situated aesthetics

Laura Menatti's [new paper](#) is about using ecological psychology and the concept of affordance to better understand how we perceive landscape(s). She proposes a "situated aesthetics" framework for landscape perception, with interdisciplinary architecture that intersects cognitive science, and landscape theory, with interdisciplinarity for architecture and sustainability projects. The chapter can be found in the book "Affordances y Ciencia Cognitiva" (Affordances and Cognitive Science, eds. Manuel Heras Escribano, Lorena Lobo Navas, Jesús Vega Encabo).

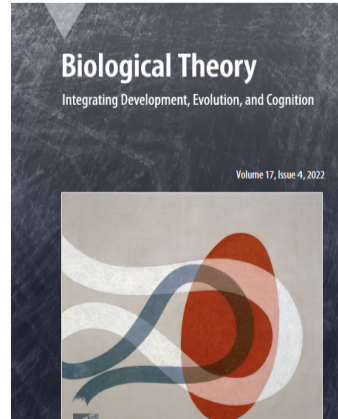
## BIOLOGICAL THEORY

Biological Theory

### Biological Theory's latest issue: 17(4) is out this month!

[Editor-in-chief Stuart Newman summarizes the issue, with links to free epdfs.](#)

[Volume 17, issue 4](#) includes a provocative argument for the role of imagination in human cognition; a proposal on how to address the long-standing, thorny problem of determining whether a multi-individual entity is a unit of selection in evolution; a two-part exploration of the biological origins and organismal loci of consciousness; an insight, with Darwin's late writings as a guide, into the anatomical basis of an emotional duality; a primer on the basis and implications of the ENCODE gene expression project; a revisiting of a work by an anti-Lysenko Soviet geneticist that was prescient for evolutionary developmental biology; and a heartfelt thank you to this year's referees.



Download pdf versions of the KLife Newsletter [here](#).

### Get in touch!

The KLI is an independent center of advanced studies in the life and sustainability sciences. The mission of the institute is to **enable scientific reasoning** that can contribute to understanding and sustaining life on Earth in its biological, cognitive, social, and cultural diversity.

The KLI supports research focusing on **evolutionary theory**, especially in its relation to development, cognition, and sustainability science, as well as on the history, philosophy, and social studies of science.

You can find further information about KLI on our [Homepage](#), [Twitter](#), and [YouTube](#).

The KLife Newsletter was conceptualized and produced by Communications Officer Lynn Chiu. Please send comments and questions to [comms@kli.ac.at](mailto:comms@kli.ac.at)

[Subscribe here.](#)